



# Every GMC will have to drop it's tanks

---

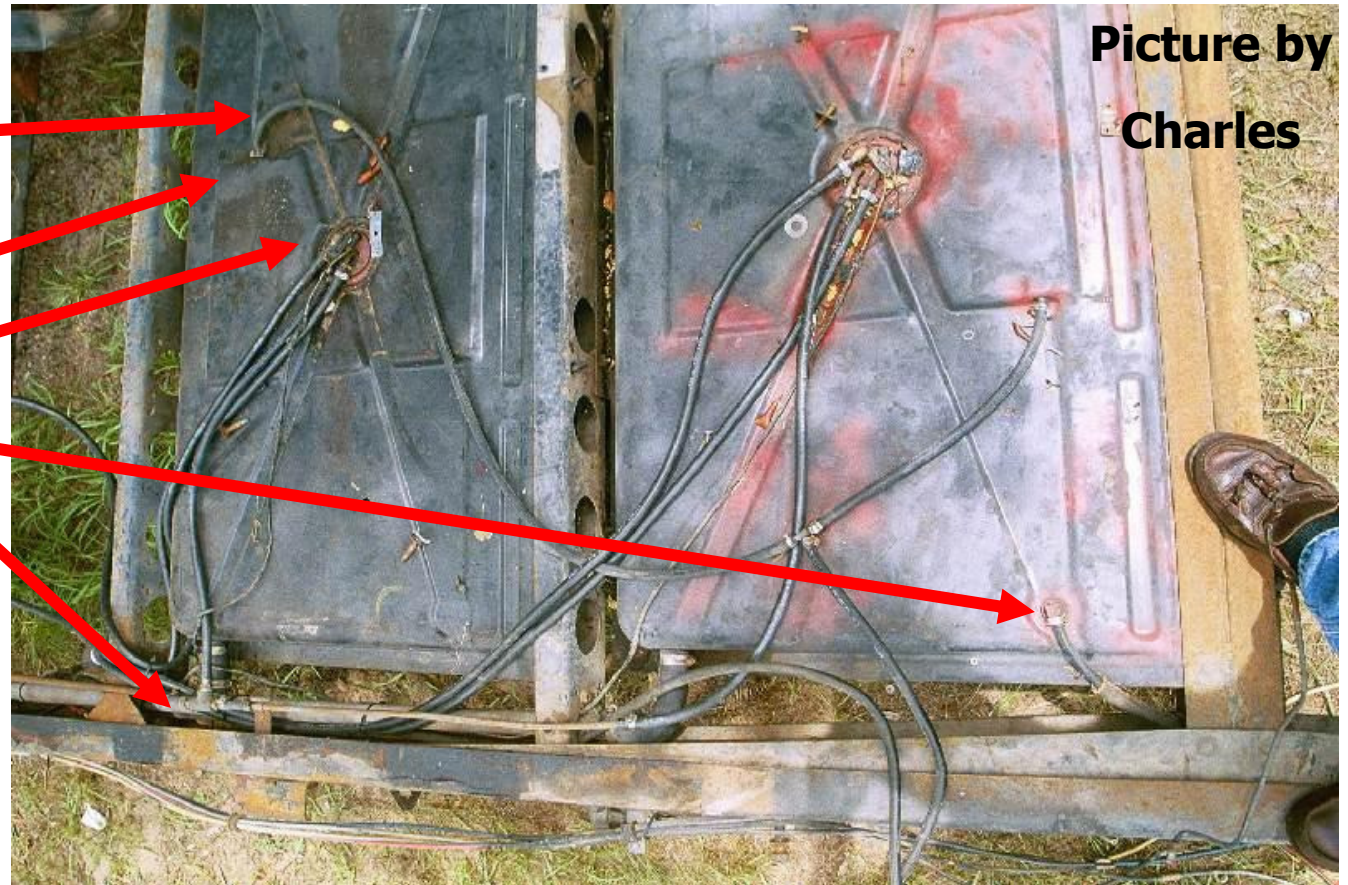
- \* RUBBER LINES ARE NOT GOING TO LAST
- \* VENT LINES AND ONAN PICK-OFF ARE A PROBLEM
- \* SENDERS HAVE TO BE REPAIRED – COMMON FAILURE MODE
- \* HOW TO REPLACE SENDER HOSES WITH HARD LINES
- \* HOW TO REPLACE VAPOR RECOVERY LINES AND RESTRICTOR
- \* HOW TO MAKE THE VENT LINES WORK (NO PRESSURE IN TANK)
- \* PARTS TO USE FOR THE HARD LINE AND COUPLERS

# RUBBER LINES ARE NOT GOING TO LAST

It looks like every GMC will have to drop it's tanks – because of this!

- \* RUBBER LINES
- \* ON TOP OF TANKS
- \* VAPOR RECOVERY
- \* SENDERS REPAIR
- \* ONAN PICK OFF
- \* VENT LINE NOT FLAT

HARD LINES NEEDED  
RUBBER REPLACEMENT  
NOT AN OPTION



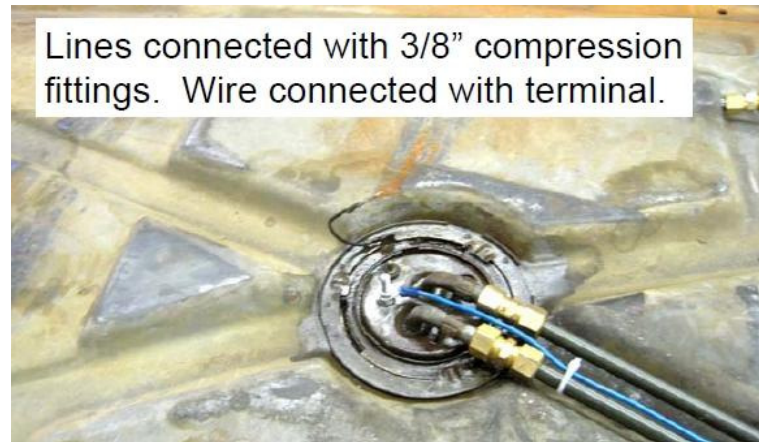
Picture by  
Charles

# REPLACE SENDER LINES WITH HARD LINES

EMORY'S IN TANK FUEL PUMPS

<http://goo.gl/ryfIQ>

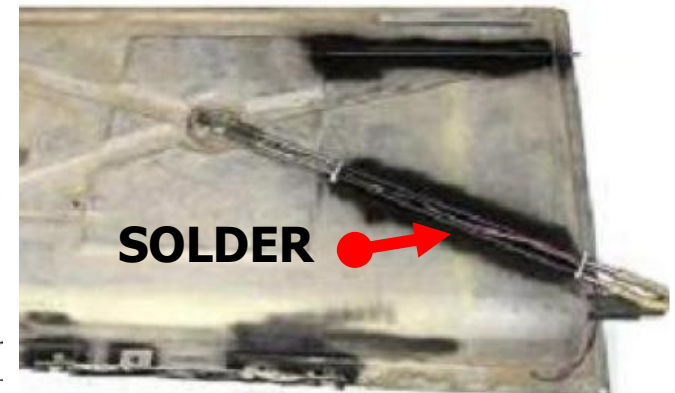
- \* USE BRAKE LINES
- \* DONE FLARES
- \* CUT TO PLACE



GARTON'S HARD LINES

<http://goo.gl/FshhO>

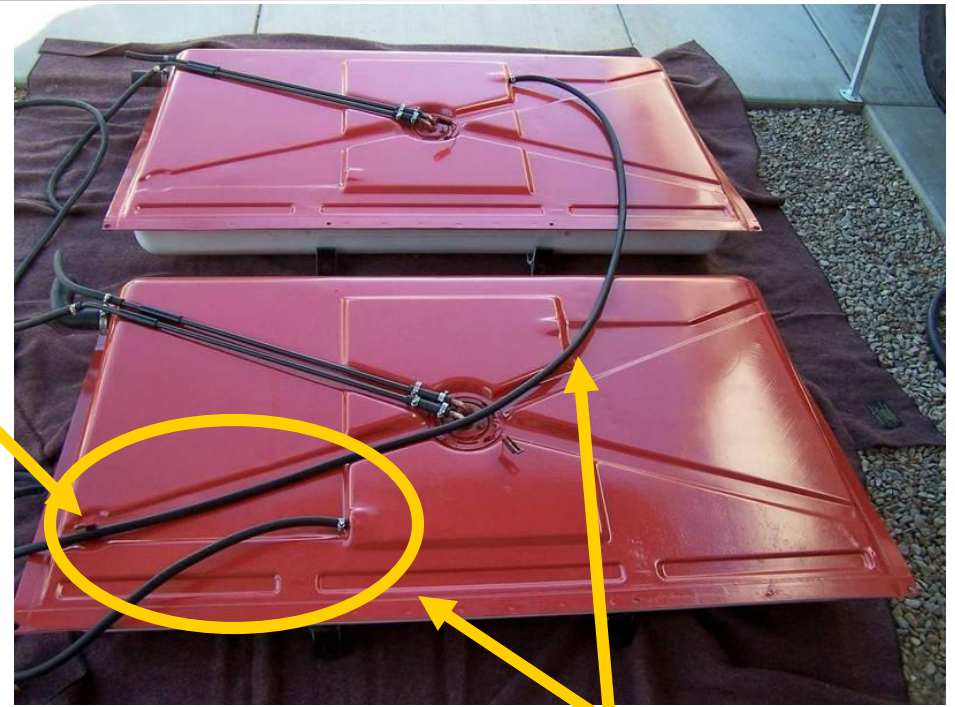
- \* RUBBER COUPLERS



# VAPOR RECOVER LINES ARE A PROBLEM



ONAN



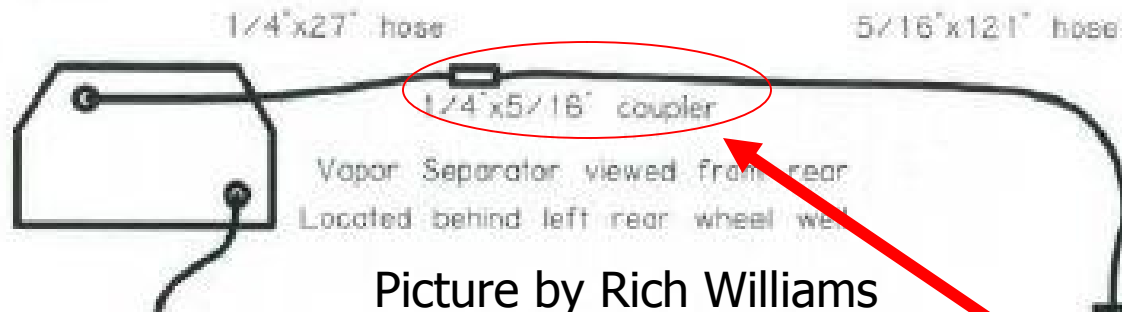
EMORY'S IN TANK FUEL PUMPS  
<http://goo.gl/ryfIQ>

IF YOU LEAVE THEM IN RUBBER  
"I'LL BE BACK"  
CARL'S TANKS

<http://goo.gl/D1Xob>

# THIS OFTEN PLUGS WITH RUST

## Original Tank Vapor Collection



Picture by Rich Williams

<http://goo.gl/ryfIQ>

Picture by

Kelvin

<http://goo.gl/tfoK7>

