



GMC BELTS WILL NOT LET YOU DOWN

- EACH BELT HAS A SEPARATE FUNCTION
- THIS FEATURE WILL GET YOU HOME
- USE THE CORRECT (11MM) BELT
- SET THE BELT ALIGNMENT
- SET BELT TENSION / DEFLECTION TO $\frac{1}{4}$ "

If a V belt is slipping, it is too loose



EACH BELT HAS A SPECIAL FUNCTION

THE GMC WILL GET YOU HOME WITH ONLY ONE BELT

*** AIR COMPRESSOR**

- when the compressor freezes, cut the belt and come on home

*** POWER STEERING PUMP**

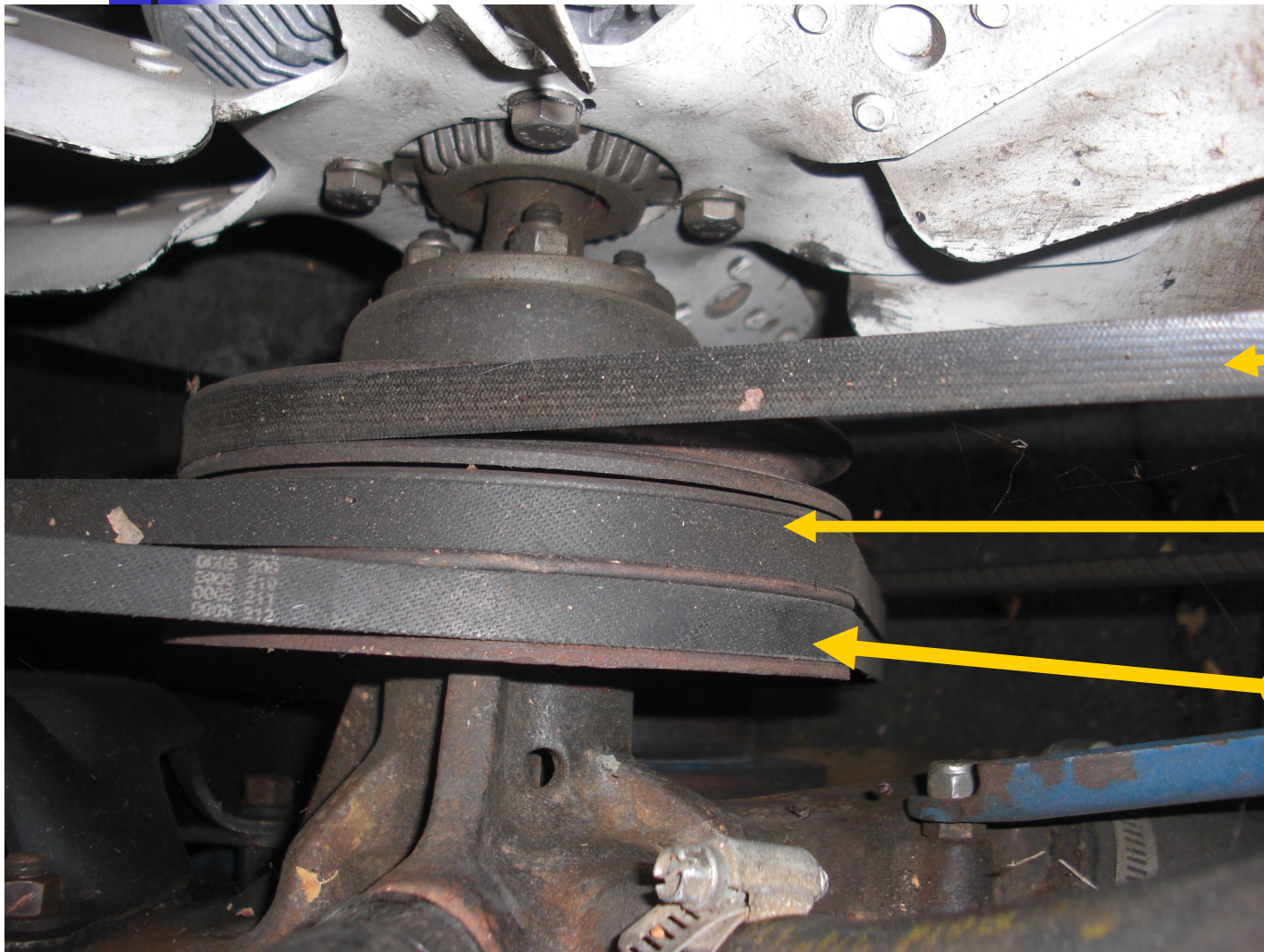
- when the pump or hoses, start to leak , cut the belt and go on

*** ALTERNATOR**

- when the alternator goes up in smoke, cut the belt and start the generator, and keep on going with the boost switch or combiner.

if all you do is carry 1 alternator belt, if you sling all the belts off, just put that 1 belt on and you can again travel. Jim bounds

THEY ALL DRIVE THE WATER PUMP AND FAN



BELT FUNCTIONS

AC

**POWER
STEERING**

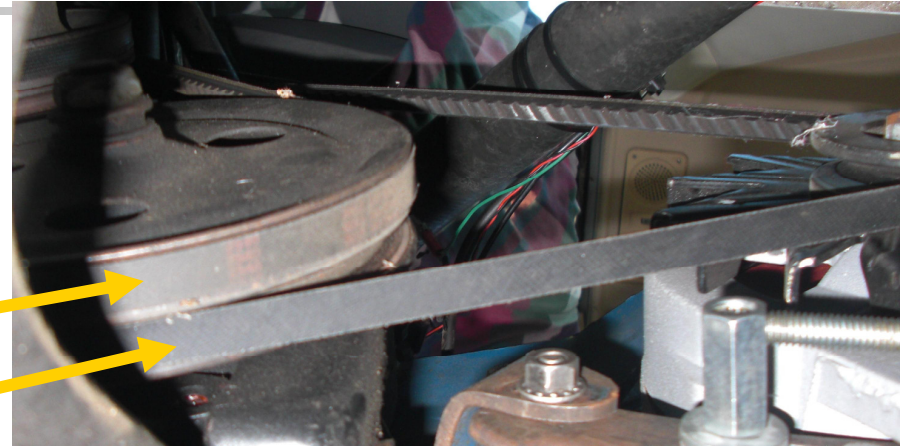
ALTERNATOR

DUAL ALTERNATOR PULLEY ARE HARMFUL

- 1 REMOVES INDIVIDUAL FUNCTION
- 2 REDUCES PS DRIVE
- 3 NOT NECESSARY
- 4 LOSS OF FUNCTION

PS - FULL WRAP

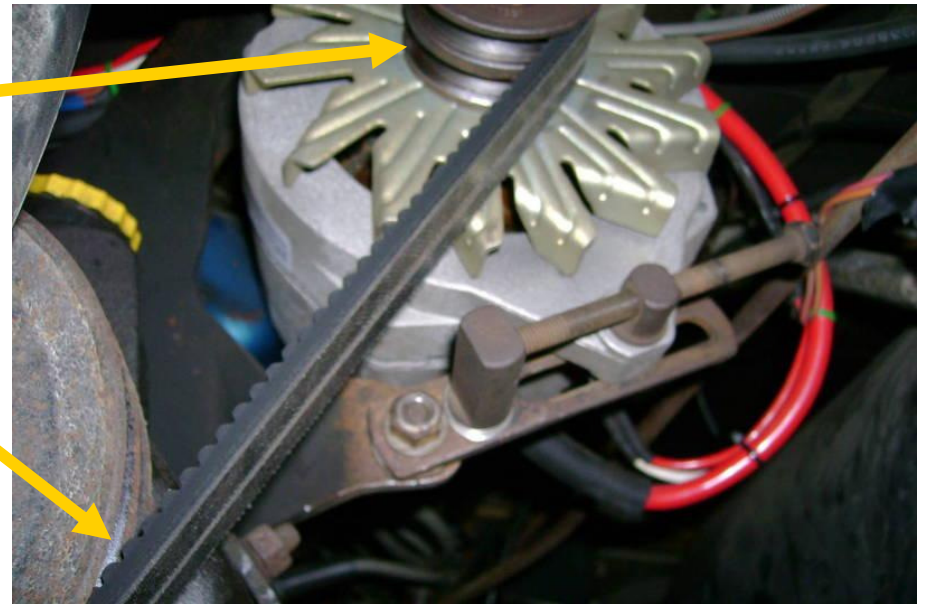
ALT - 1/8 WRAP



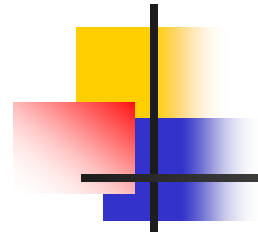
DUAL PULLEY

PS - 1/8 WRAP

ALT - 1/8 WRAP



USE THE CORRECT BELTS TEST THEM ALL



10MM WILL NOT GO OVER BELT



OR MEASURE 7/16" ON THE TOP

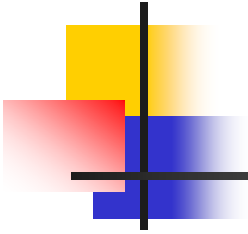
CAUTION
CHECK ALL OF THESE BELTS WITH A 10 mm WRENCH FOR SIZE

BELTS 455 cc	GM	DAYCO	* NAPA	GOODYEAR	* GATES	KELLY	CADNA PBH
POWER STEERING(3/8" X 42")	943640		25-11433	15466	7450	15450	401-7445
(7/16" X 42")	9433742				7450		401-7450
AC 7/16" X 62"	9433776		25-15733	15634	7619		
AC				15621	7612	15620	401-7619
ALTERNATOR	405600	15570	25-14483	15574	7507	15573	401-7570

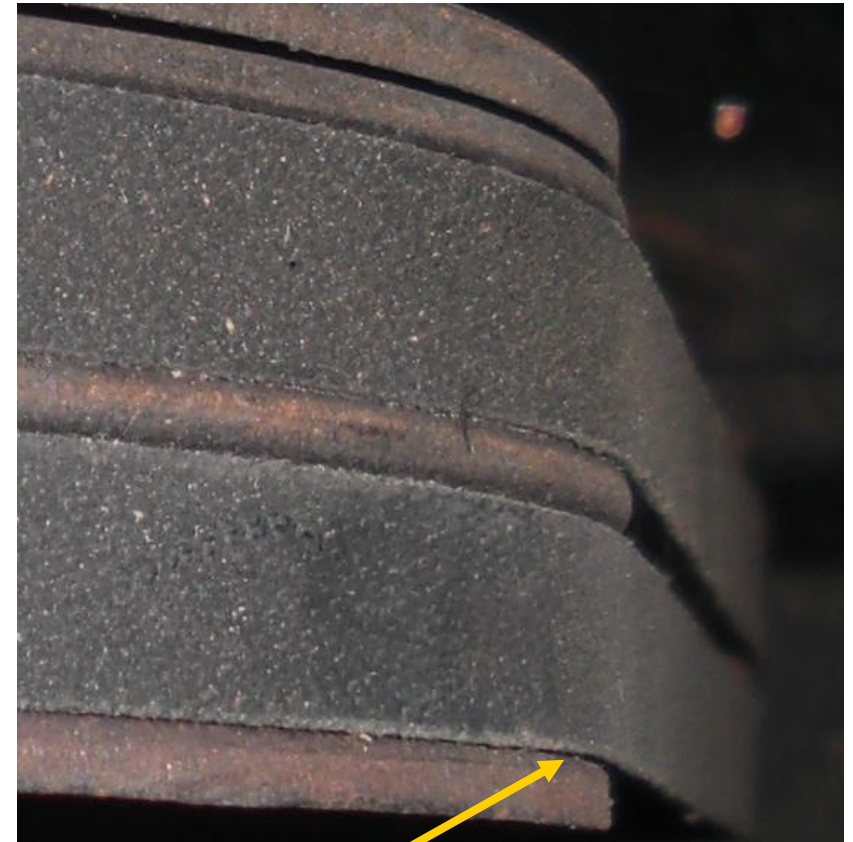
* The 3/8" UNDESIRABLE belts are really 9.5mm wide and usually state 9.5mm on the package even though the part numbers may match a 7/16 belt. **This is why you take a 10mm wrench open end to see if it will fit over the belt easily.** The two biggest offenders of this part number / size mismatch are Gates and NAPA.
kenB

BELTS 403 cc	GM	DAYCO	* NAPA	GOODYEAR	* GATES	KELLY	CADNA PBH
POWER STEERING (3/8" X 42")	9433640	15440	25-11303	15466	7450	15450	401-7445
(7/16" X 42")	9433742						
AC	9433670	15605	25-14983	15607	7603	15585	401-7603
ALTERNATOR	9433767		24-14483	15574	7507	15573	401-7570

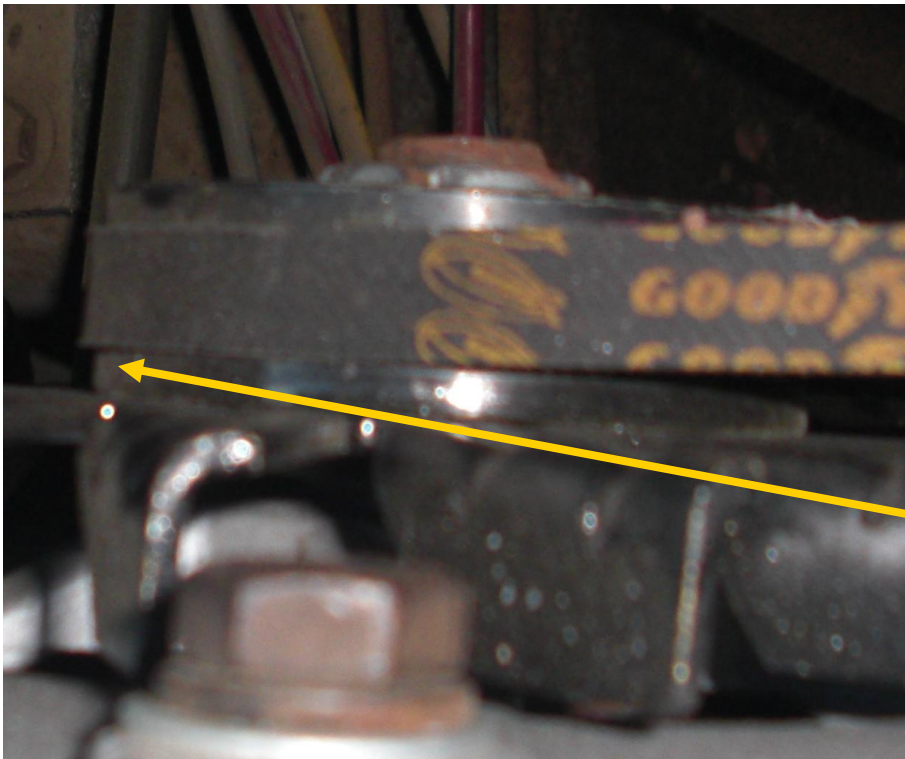
THIS IS WHAT THE CORRECT BELTS LOOK LIKE



WATER PUMP

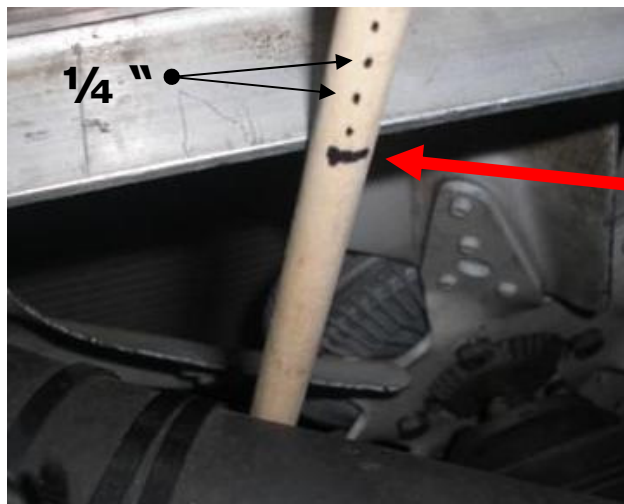


ALTERNATOR



Belt must ride high in the pulley

TESTING V-BELT TENSION



3- TOUCH ROD TO MIDDLE OF BELT (3 EA)

4- MARK ZERO POSITION

5- PUSH DOWN ($\frac{1}{4}$ " IS CORRECT DEFLECTION)

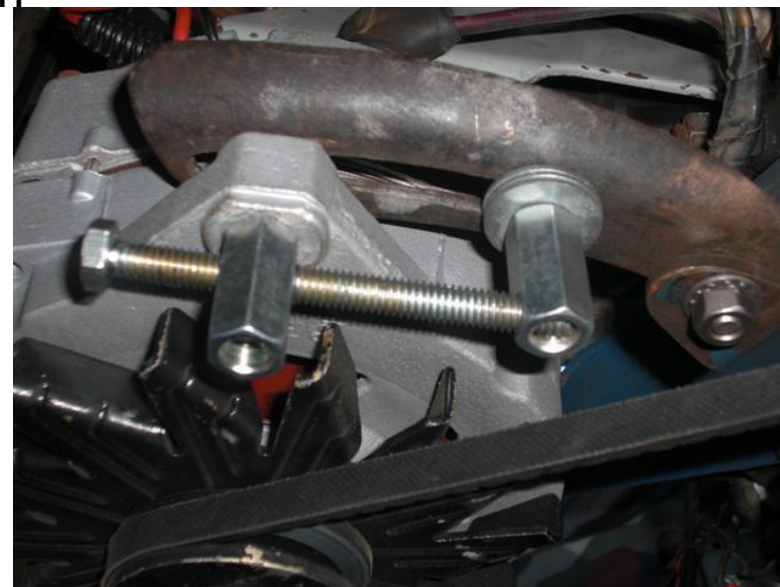
6- TEST ALL 3 BELTS

7- ADJUST BELTS

TENSION TOOLS



FOUND By
Paul W Lehmann

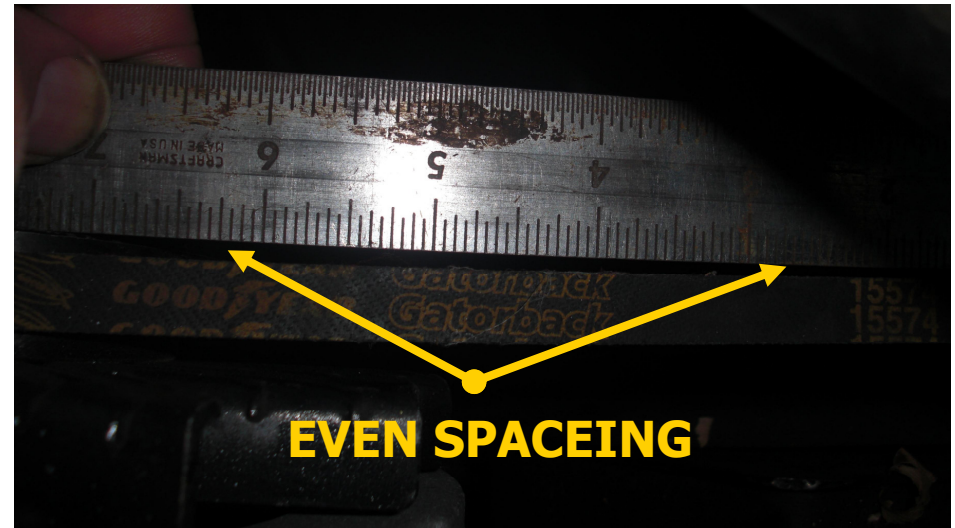


SET THE BELT HORIZONTAL ALIGNMENT

THIS IS BAD



THIS IS BETTER

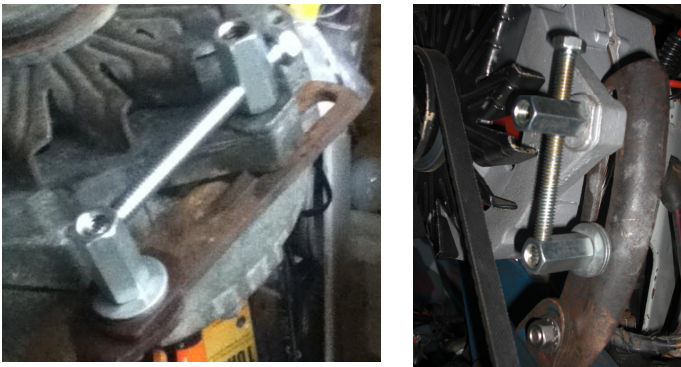


ADJUST HERE

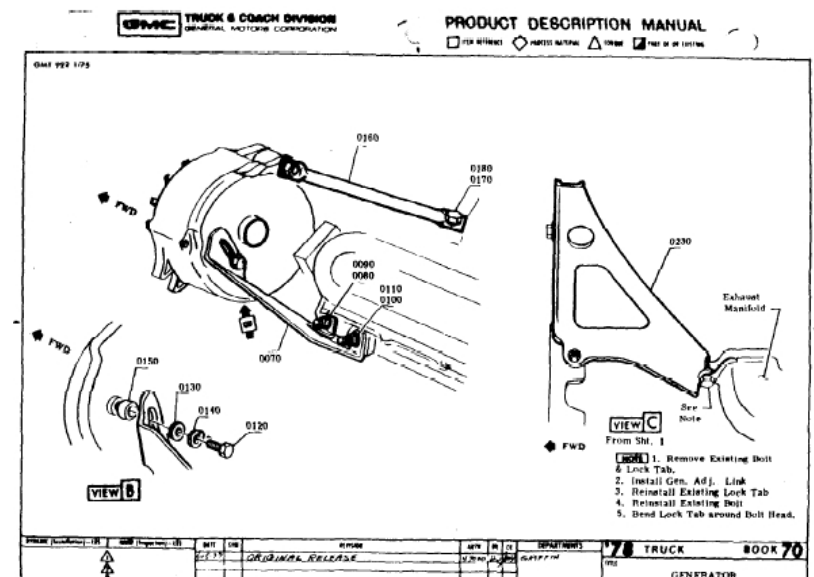
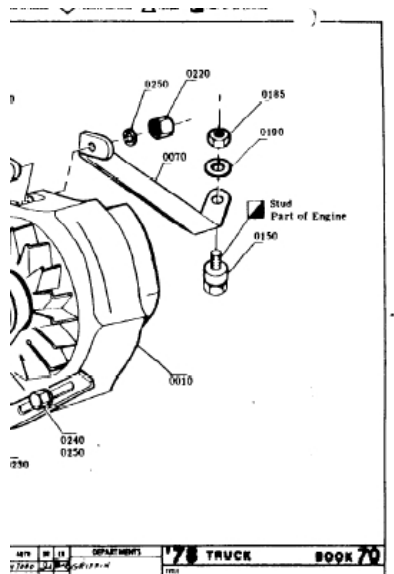


30 YEARS OF REPLACEMENTS ALL ARE OUT OF ALIGNMENT

455 BRACKETS



403 bracket





FIX YOUR BELTS THEY WILL GET YOU HOME

- EACH BELT HAS A SEPARATE FUNCTION
- THIS FEATURE WILL GET YOU HOME
- USE THE CORRECT (11MM) BELT
- SET THE BELT ALIGNMENT
- SET BELT TENSION / DEFLECTION TO $\frac{1}{4}$ inch
- ADJUST THE PS PUMP FIRST (JIM BOUNDS)

---RECOMMENDATION---

**DO NOT CHANGE THE OEM
CONFIGURATION**