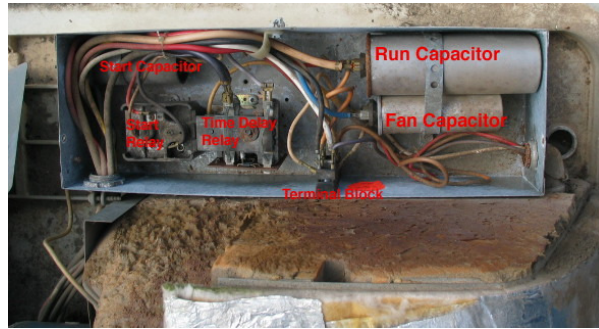


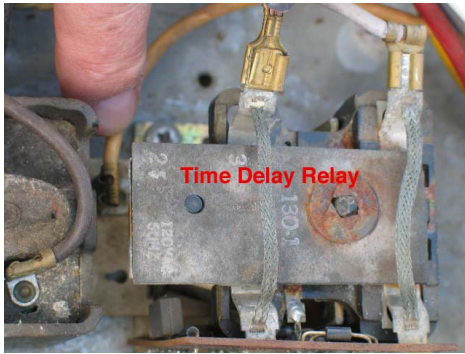
How to remove the time delay relay from a Duo-Therm Air Conditioner



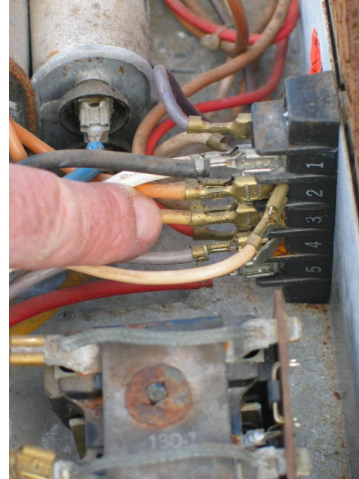
1. Remove the 13 screws that hold the cover and lift the cover and lift the cover out of the way.



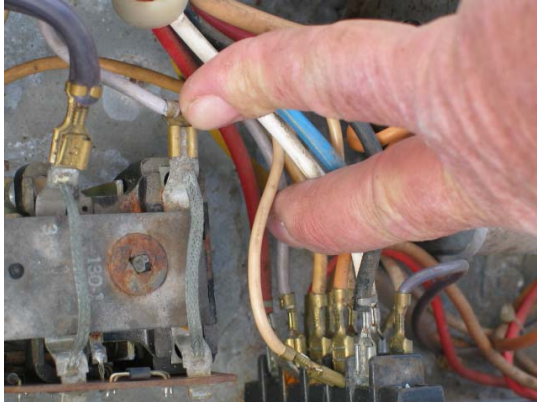
2. This is the inside of the control box that is located under the AC cover.



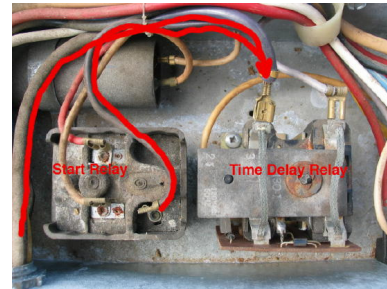
3. This is a close-up of the Time Delay Relay. Remove the yellow wire from the lower connection block and...next photo...



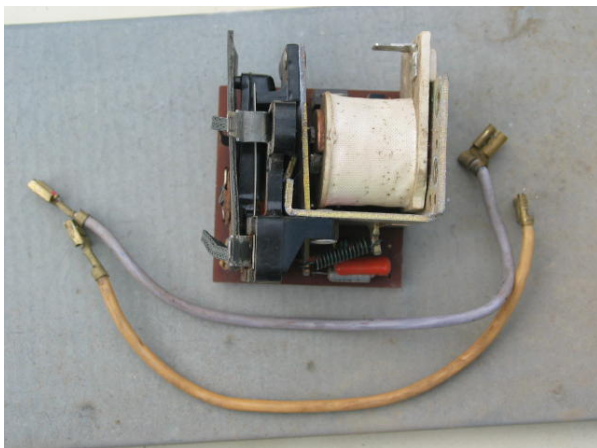
4. and follow the yellow wire to the terminal block. Remove from the terminal block #3 and pull the wire out of the harness.



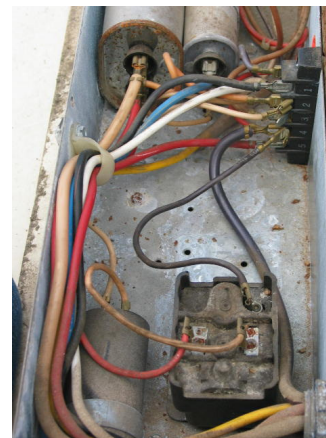
5. Remove the grey wire from the "Time Delay Relay", follow the wire to the terminal block, remove it from terminal block #4, and pull the wire out of the harness.



6. The large black wires coming from the compressor and the small black wire coming from the Start Relay....disconnect them from the Time Delay Relay...Do not separate them.



7. Remove the Time Delay Relay. These are all the parts that you should have removed from the control box.



9. This is what it should look like when it is done.

8. Reconnect the large gauge blk wire to terminal #4. That black wire should be rerouted behind the Start Relay . The small gauge black wire from the Start Relay is also pulled out of the harness so it they will reach the terminal block #4.