

STEP 1. Unpack hardware and assemble main arms as shown in Fig. 1. Bolt on all castings securely.

STEP 2. Remove rear top running light from mounting and pull up extra wire for re-installing above awning rail after Step 3. (See Fig. 2-1.)

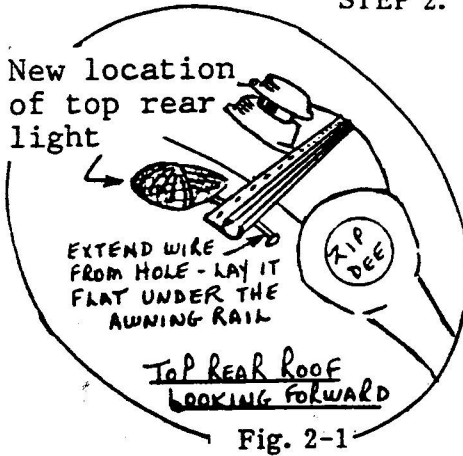


Fig. 2-1

STEP 3. To determine the position of the rear arm, first mark rear plumb reference line 1/2" from rear edge of compartment as shown in Fig. 3. Then measure forward the exact length of the awning ordered and mark front plumb line.

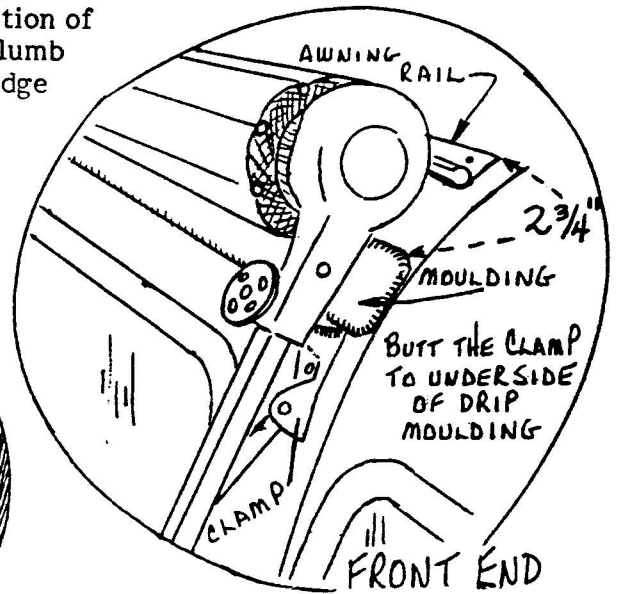


Fig. 2-2

Mount clamps as shown with 3-#10 x 3/4 screws using 9/64 or #26 drill.

Extend Awning Rail 1" beyond plumb lines

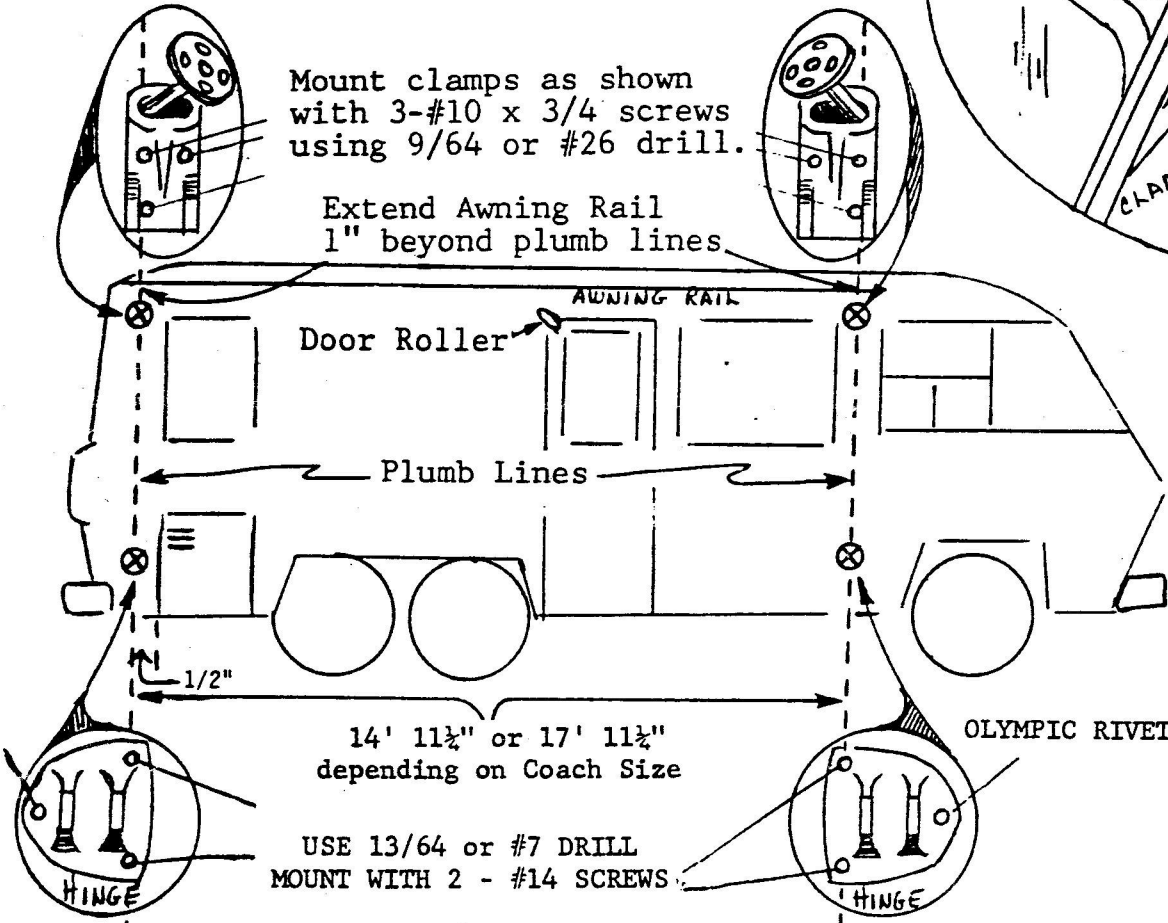
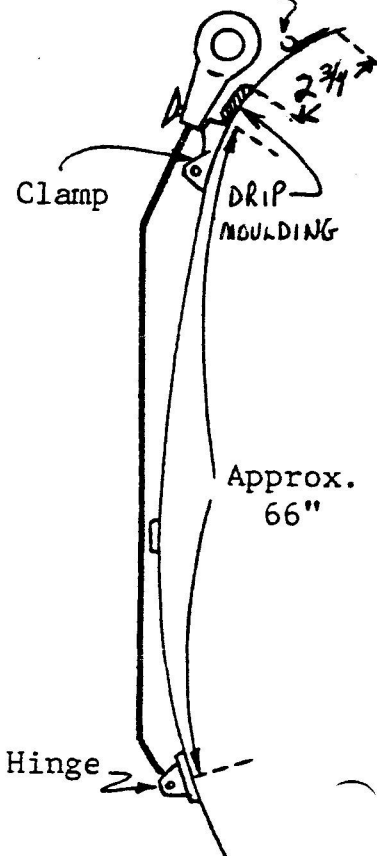


Fig. 3

Awning Rail



COACH PROFILE

Fig. 2-3

Step 4. Position awning rail as shown in Fig. 2-2. Rail should extend evenly beyond plumb lines. Be sure running light wire is put flat under rail (Fig. 2-1). Attach rail with #6 or #8 x 1/2" sheet metal screws (not provided).

Step 5. Hold assembled front main arm firmly against the coach so that clamp is butted against bottom of drip molding as shown in Figures 2-2 & 2-3 and so that hinge and clamp are aligned on plumb lines as shown in Fig. 3. Mark locations of clamp and hinge and mount as shown. Attach spring arm assembly. Repeat step for rear arms.