

**GMC MOTORHOME REAR SHOCK ABSORBER FAILURE – PASSENGER SIDE (REAR BACK WHEEL)
– SEPTEMBER 2020**

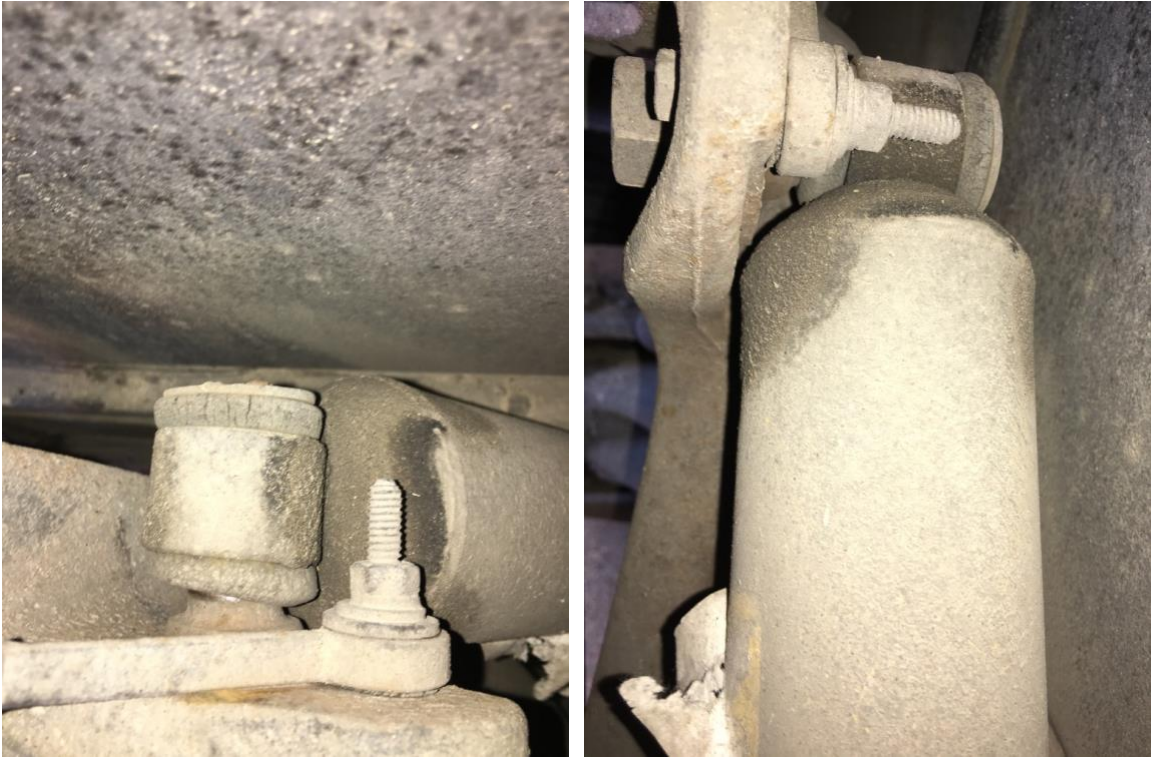
I just happened to look under my passenger side far rear tire and noticed a piece of curved metal about an inch wide sticking up above the tire close to the body behind the control arm and airbag. Only after I took these pictures did I see what happened. The top of the shock absorber was broken. The metal surrounding the bushing had peeled itself back and broken as shown. Interestingly, I did not notice any significant handling issues when driving on a recent trip.





The other 3 rear wheels look reasonably OK.

GMC MOTORHOME – PASSENGER SIDE (REAR FRONT WHEEL) Top of Shock absorber



GMC MOTORHOME – DRIVER SIDE (REAR BACK WHEEL) top of Shock Absorber:



GMC MOTORHOME – DRIVER SIDE (REAR FRONT WHEEL) Well top of Shock Absorber:



Bottom of Shock bolted to the frame for reference:





GENERAL MOTORS CORPORATION

PRODUCT DESCRIPTION MANUAL

□ ITEM REFERENCE ◇ PROCESS MATERIAL ▲ TORQUE ■ PART OF OR EXISTING

GMT 924 1-73

